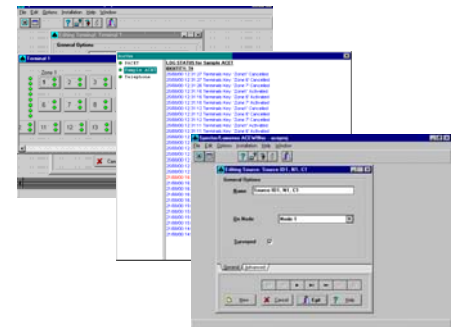


ACEView 100 & ACEWINner

ACE VIEW is a Windows based maintenance aid application designed to enable the operator to pin point fault condition on a public address system. ACEWINner enables the engineer to download system attributes from a personal computer to ACE100.



ACEView 100

The ACE100 node management package extends an RS232 serial communication supervisory output from the ACE100 node.

The RS232 port issues both operational and / or surveillance monitoring activity as data strings that can either drive a printer or personal computer running Windows "Hyper terminal" application. This text based output can be utilised to directly control ACEView, which issues system supervisory status as a series of user friendly graphical images.

Where a networked ACE100 system is installed, data concerning status of all ACE100 management nodes and associated hardware is issued by all ACE100 node supervisory RS232 output ports. This enables supervisory data concerning the entire site to be available locally at each node.

ACEWINner

ACE100 system parameters can be readily configured and reconfigured with ACEWINner Windows personal computer application. ACEWINner enables the engineer to download system attributes from a personal computer to non volatile memories situated in ACE100 node hardware and associated operator ACET microphone access terminals.

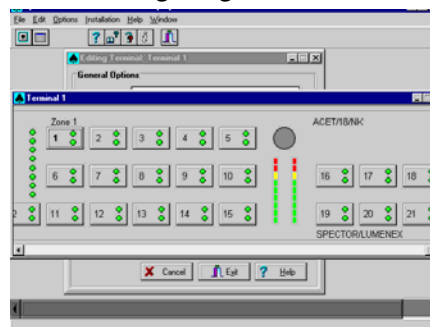
Configuration transport is via a plug-in Network Interface situated in a P.C. ISA slot (or PCMCIA slot in the case of a lap top machine) – ACE/420/PC NET. This network interface enables connection directly to the ACE100 data bus via a port on an ACE/400/HUB Agile data hub via a single twisted pair cable. In the event that remote configuration is required, a LONtalk protocol converter can be installed.

Typical ACE100 VIEW screen
ACET Terminal Operational Status

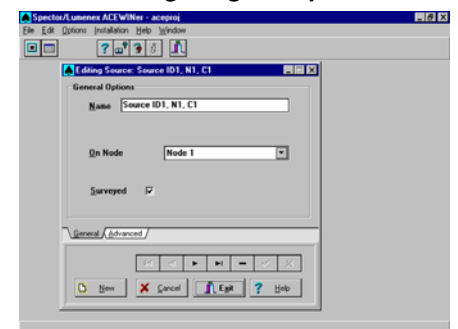


Typical ACEWINner Configuration Screen

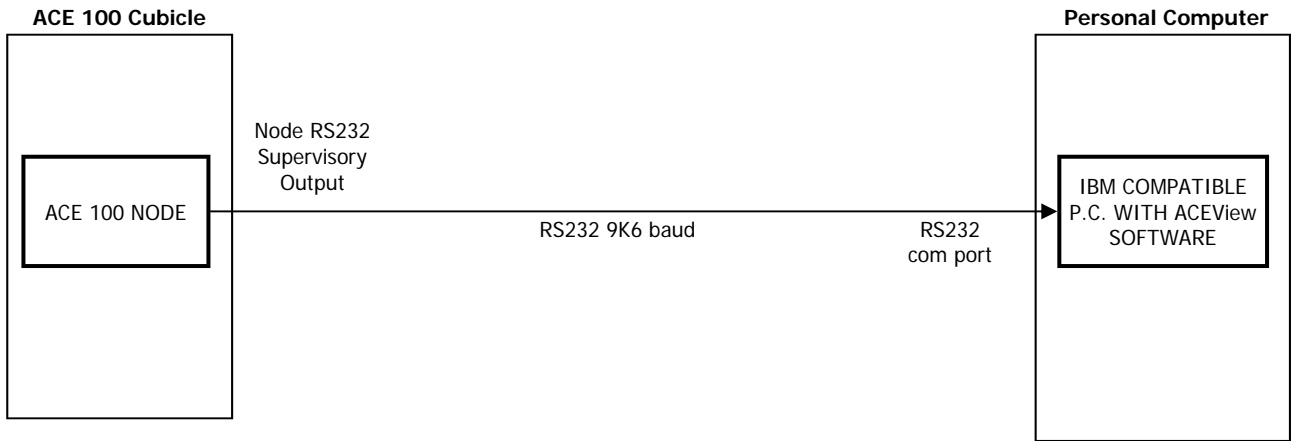
Configuring an ACET



Configuring an input source



Block Diagram to show ACEView Supervisory Connectivity



Block Diagram to show ACEWINner Configuration Connectivity

